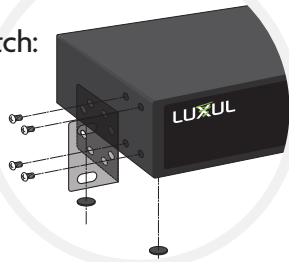




Managed PoE AV Switch Setup Guide

1. Setting up your Switch:

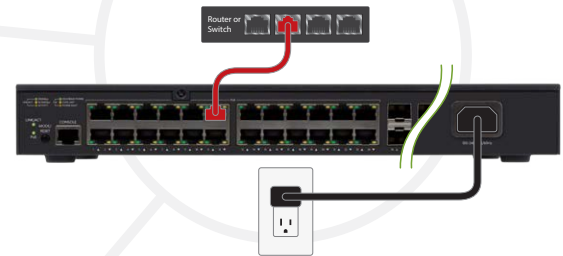
Place your switch in a rack or on a desktop



2. Connect one Ethernet cable from your router or other switch to any port on the switch. Connect the included power cable from your switch to your power source



NOTE: Your switches boot time will be a minimum of 60 seconds



The screenshot shows the LUXUL web interface with a progress bar at the top indicating four steps: 1. PASSWORD, 2. IP ADDRESS, 3. DATE & TIME, and 4. INFORMATION. The first step, 'PASSWORD', is currently active. The main content area is titled 'Change default password' and contains two input fields: 'New password' and 'Confirm new password'. Both fields have a 'required' label and a password strength indicator icon. A green 'Next' button is located at the bottom of the form.

3. The default IP address method for your switch is via DHCP with a fixed failover of 192.168.0.4. Please locate your switch IP address using your Router's Connected Client list or similar function. Using the IP address that you find there, login with the default credentials.

User Name: **admin**

Password: **admin**



NOTE: If your computer or device isn't set to obtain an IP address automatically, you'll need to set a temporary static IP address on that device. Set the IP address of your computer to an address in the 192.168.0.X range and set your subnet mask to 255.255.255.0. You can leave the default gateway/router IP address blank.

What if...

I need to restore factory default settings?

If you wish to factory default the switch, hold the button labeled 'MODE/RESET' for longer than 7 seconds. The switch will reboot once the button is released. Reboot will take approximately 60 seconds before the UI becomes available. If a DHCP server is not available the Failover IP will become active 60 seconds after the boot completes.

I need to restart my switch?

To restart your switch, unplug the power cable or hold the button labeled 'MODE/RESET' for 2-7 seconds, or use the Reboot function in the Administration tab in the UI.

I want to perform advanced configuration?

The default IP address method for your switch is via DHCP with a fixed failover of 192.168.0.4. Please locate your switch IP address using your Router's Connected Client list or similar function. Using the IP address that you find there, login with the default credentials.

NOTE: Changes made to the switch's configuration **must be saved** or they will be lost upon switch reboot. Go to Administration> Configuration>Save startup-config and Save Configuration.

FAQ

We have prepared a list of items to help you best understand the new features with these models and how to best plan and execute systems that feature them.

To see our FAQs, visit the "Resources & Tools" section at the bottom of your switches product page on legrandav.com/luxul.

Product Descriptions

SW-610-24P-R 24 PoE+ Ports with (4) 10 Gigabit SFP+ Ports Managed Gigabit Switch

View Luxul's Privacy policy at:

https://www.legrandav.com/legal/privacy_policy


The marking information is located at the bottom of the apparatus

Copyright and Trademark Notices

No part of this document may be modified or adapted in any way, for any purposes without permission in writing from Luxul. The material in this document is subject to change without notice. Luxul reserves the right to make changes to any product to improve reliability, function, or design. No license is granted, either expressly or by implication or otherwise under any Luxul intellectual property rights. An implied license only exists for equipment, circuits and subsystems contained in this or any Luxul product.

© Copyright 2021 Legrand AV Inc. All rights reserved. The name Luxul, the Luxul logo, the Luxul logo mark and Simply Connected are all trademarks and/or registered trademarks of Legrand AV Inc.

All other trademarks and registered trademarks are property of their respective holders.

A brand of  **legrand**

What do the LEDs on my switch indicate?

Indicator	State	Description
Power	On	Normal operation
	Off	Power disconnected
System	Blinking	Normal operation
Ethernet Port Link/Act Status*	Green	1000Mbps device connected to port
	Amber	10/100Mbps device connected to port
	Blinking	Data being transferred
	Off	No device connected
Ethernet Port PoE Status*	Green	Switch providing PoE power to connected device
	Amber	PoE power limit exceeded
	Blinking	PoE fault error
	Off	No PoE device connected
SFP Port Status	Green	1Gbps connection
	Blue**	10Gbps connection
* Quickly press and release the 'MODE/RESET' button to switch the LEDs between 'LINK/ACT' and 'PoE' status		
** Applies only to the SW-610-XX models		

PoE power budget

Do not exceed the PoE budget for your model shown in the table below

Model	PoE budget	Power input rating info (on product label)
SW-610-24P-R	370W	AC100-240V-50/60Hz 8A

This equipment is not suitable for use in locations where children are likely to be present.

NOTE: This device is intended for indoor use only. All Ethernet cables are designed for intra-building connection to other equipment. Do not connect these ports directly to communication wiring or other wiring that exits the building where the appliance is located.

Technical Support

P: 801-822-5450

E: support@luxul.com

Support chat: LegrandAV.com click 'Live Chat' (upper right) and select Luxul under 'Brand'

Sales

P: 801-822-5450

E: sales@luxul.com