

QuattroPod

QuattroPod Web Setting Manual



Introduction

Thanks for choosing QuattroPod, the most advanced casting equipment powered by EZCast Technology.

QuattroPod can support up to four mobile devices as input sources, casting the content to the same output screen simultaneously. Also, QuattroPod is user-friendly to heterogeneous platforms, supporting Android, iOS, Windows, and Mac, which greatly enhances the availability for business, education or meeting usage scenarios.



Configuring your QuattroPod via Web

For most EZCast products, user has to download EZCast App before start using, such as EZCast 4K, EZCast Pro Dongle, etc. However, with QuattroPod, user may configure their device via a web browser interface instead, which greatly enhances user experience.

In QuattroPod's Web Setting sections, customers may do custom setting including output resolution, preferred language, max connections, etc, based on different needs and usage scenarios.

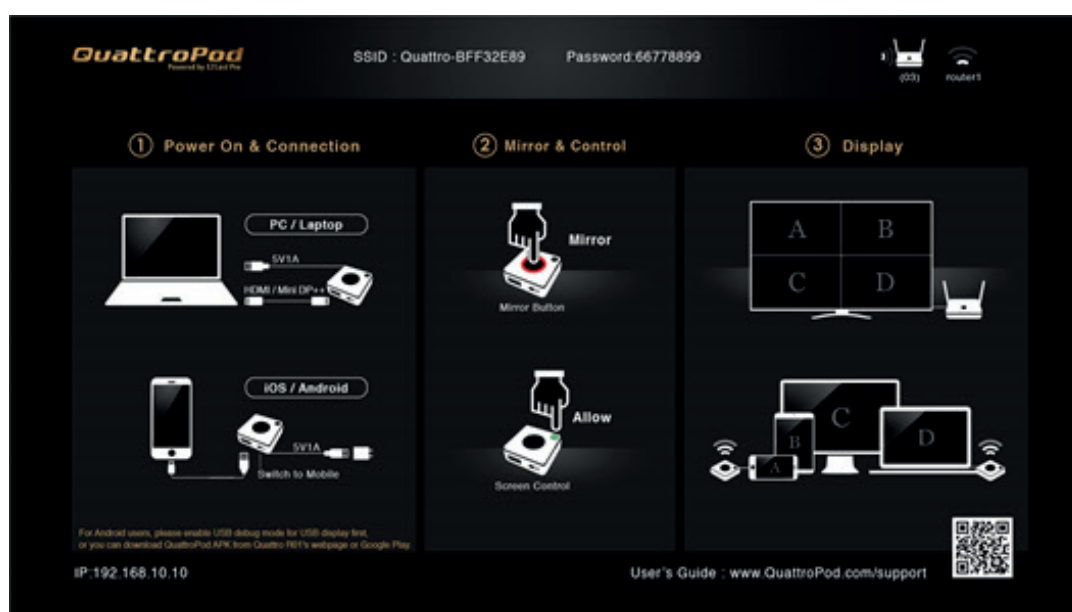
Begin to Cast with QuattroPod

Before casting with QuattroPod, please follow the below instructions, connecting your phone or laptop to QuattroPod. We provide user with two connecting methods: Direct Link or Through Wi-Fi.

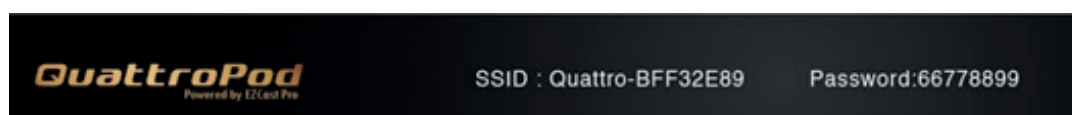
1 Connecting through Direct Link

- 1.1 Connecting QuattroPod to an external power supply.
- 1.2 Connecting QuattroPod to an external display via HDMI port.

Once the above steps are done, users will see the below standby screen on the external display.



- 1.3 User may see the required information for connection at the upper middle of the standby screen: SSID and Password

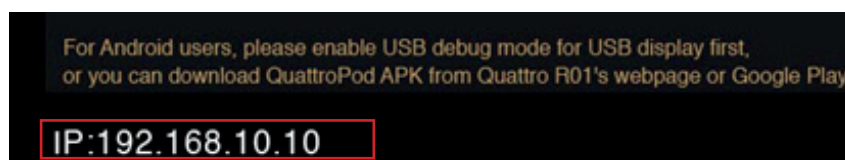


- 1.3.1 SSID: Selecting the correct SSID in the device's Wi-Fi list

- 1.3.2 Password:

Entering the password to connect your device with QuattroPod

- 1.4 Once connected, open your web browser, entering the IP address at the URL bar. You may see the IP address at the bottom left corner. Please note that the below IP is for reference only, which may vary depending on the device.



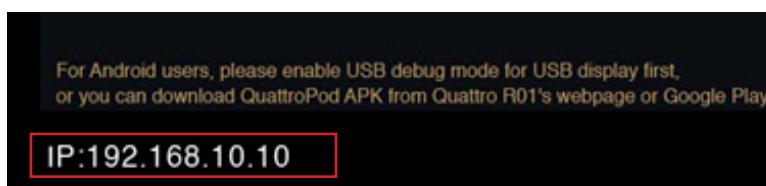
1.5 You may see the Web Setting Page once successfully connected.

2 Connecting Through Wi-Fi or External AP

2.1 If QuattroPod is connected to the internet, the Wi-Fi icon will be displayed at the upper right corner of the standby screen.



2.2 Entering the IP address at the URL bar. You may see the IP address at the bottom left corner. Please note that QuattroPod and mobile device must facilitate the same network.



2.3 You may see the Web Setting Page once successfully connected.

Web Setting Home Page

User may see two icons at Web Setting Home Page. Each of them serves a different purpose.

1 Upper Right Icon-Login as Admin



1.1 Press this icon and login as an Admin role. Please note that the first time login as Admin user, entering the default password "000000".

- 1.2 To provide better security for QuattroPod, user must modify the default admin password.

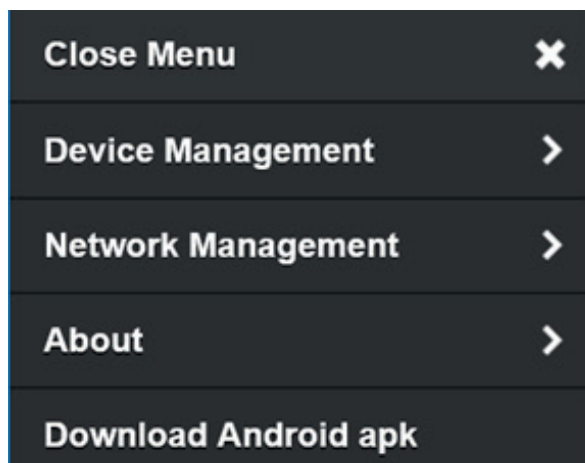
2 Upper left Icon-QuattroPod Setting



After pressing, the left side menu will pop out, providing user with different options about device configuration. QuattroPod is designed with two login mode: Non-Admin and Admin.

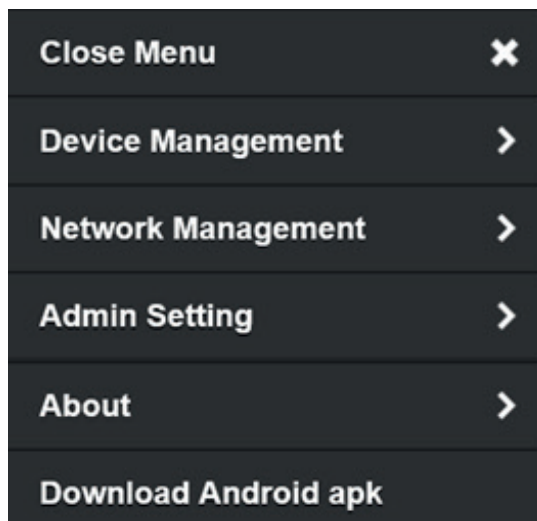
2.1 Non-Admin User:

A user is provided with normal access control right, including Device Management, Network Management, etc.



2.2 Admin User:

An Admin User is provided with the finer granularity of access control right.

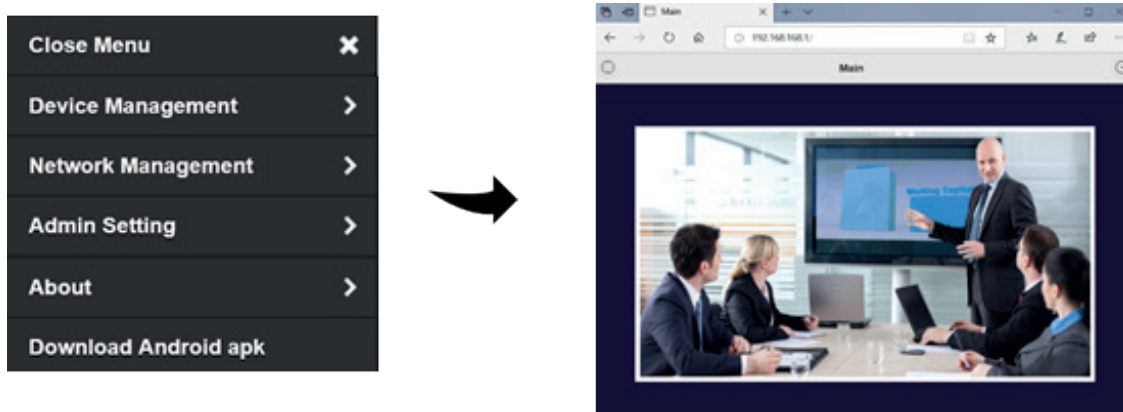


Start Configuring your QuattroPod

In the following section, we will elaborate on the details of each configuration option.

I. Close Menu

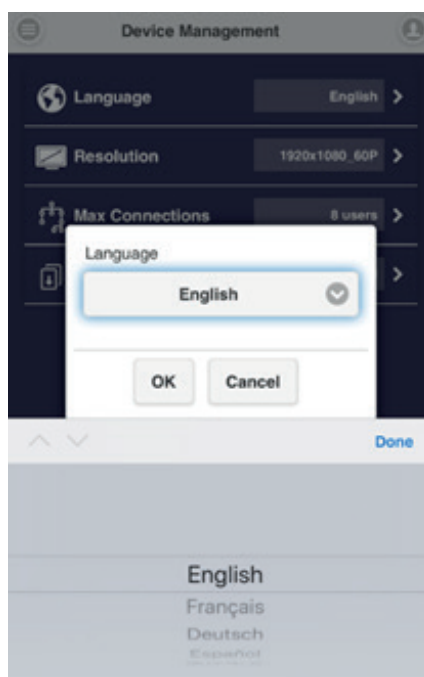
When clicking the "X" mark, the window will return to Web Setting Home Page.



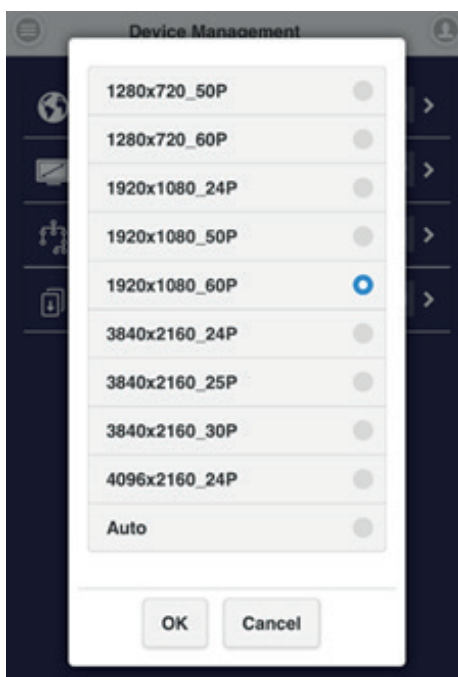
II. Device Management

QuattroPod provides users with the following configuration options, including Language, Resolution, Max Connections, and Download Pairing File.

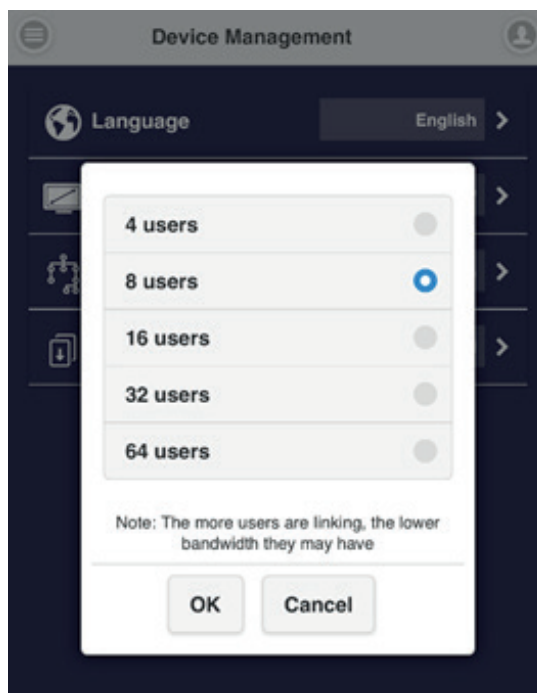
- i. Language: Supporting mainstream languages, such as English, German, French, Chinese, etc.



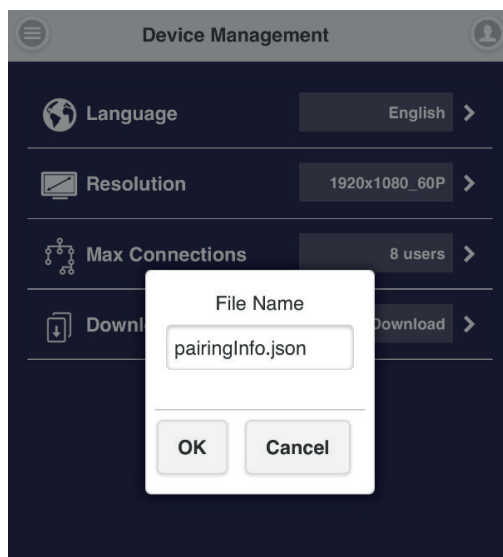
- ii. Resolution: QuattroPod will select proper output resolution automatically. User may switch to other options based on different usage scenarios. The default output resolution will be 1920 x 1080_60P. QuattroPod can support up to 4K with frame rate 24P.



- iii. **Max Connections:** Host may decide the number of devices that allowed to connect to QuattroPod. The default setting of connections is 8 users. Please note that with the rising of connected devices, the lower network bandwidth would have for each user.



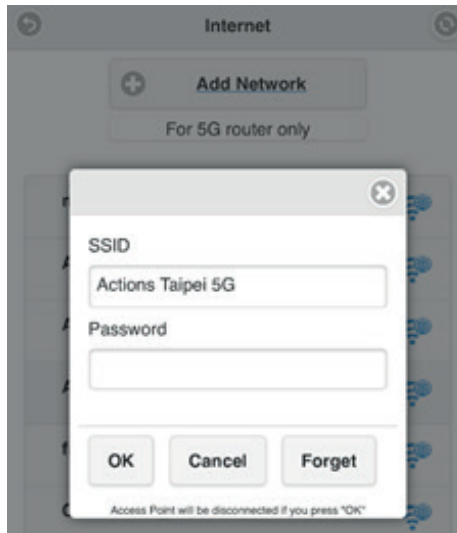
- iv. **Download Pairing File:** Download the required file for pairing R01 and T01.



III. Network Management

Connecting QuattroPod to the internet through external Wi-Fi or LAN.

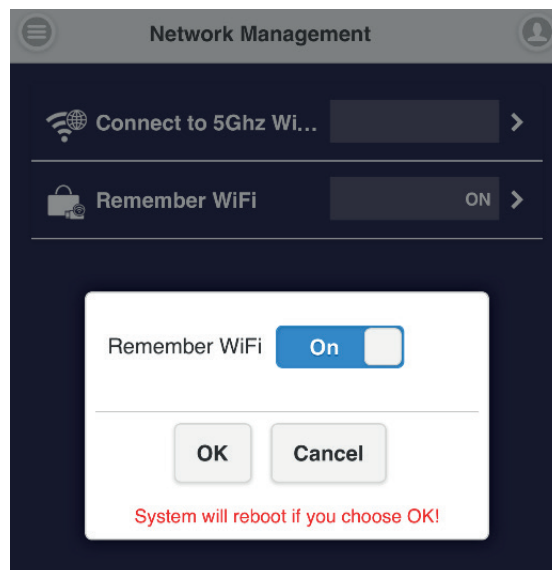
1. Connect to 5Ghz Wireless Access Point: Once your device is connected to QuattroPod, entering the required password to access to an external Wi-Fi.



- 2 Remember Wi-Fi:

2.1. Remember Wi-Fi On: QuattroPod will remember the previous Wi-Fi configuration.

2.2. Remember Wi-Fi Off: QuattroPod will erase the Wi-Fi configuration once disconnected.



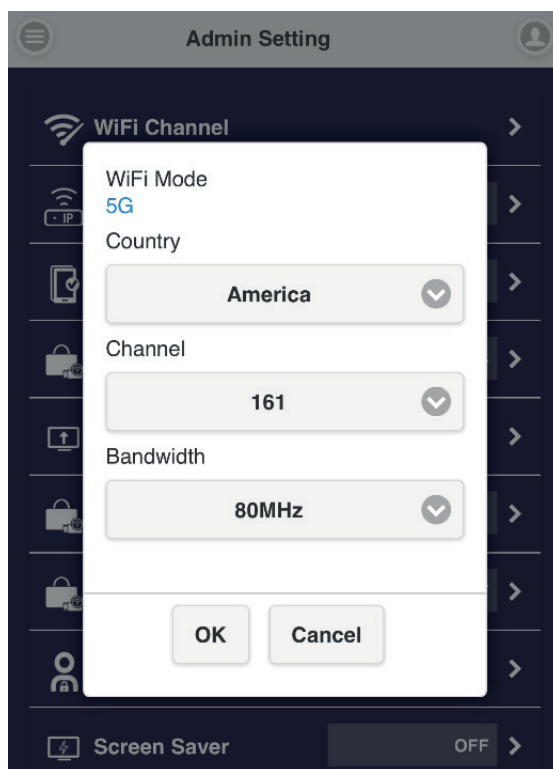
IV. Admin Setting:

Admin Setting is designed for advanced users, including MIS Engineer, IT specialist, Network admin, etc. In Admin Setting section, QuattroPod provides users with various custom configurations.

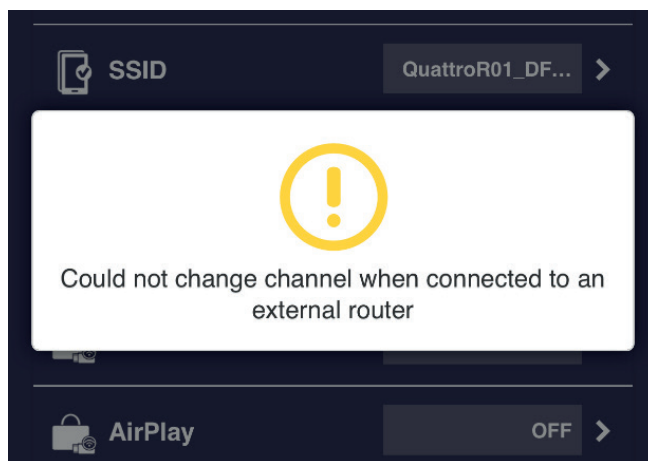
i. Wi-Fi-Channel:

Setting up Wi-Fi Channel. QuattroPod provides the below three options:

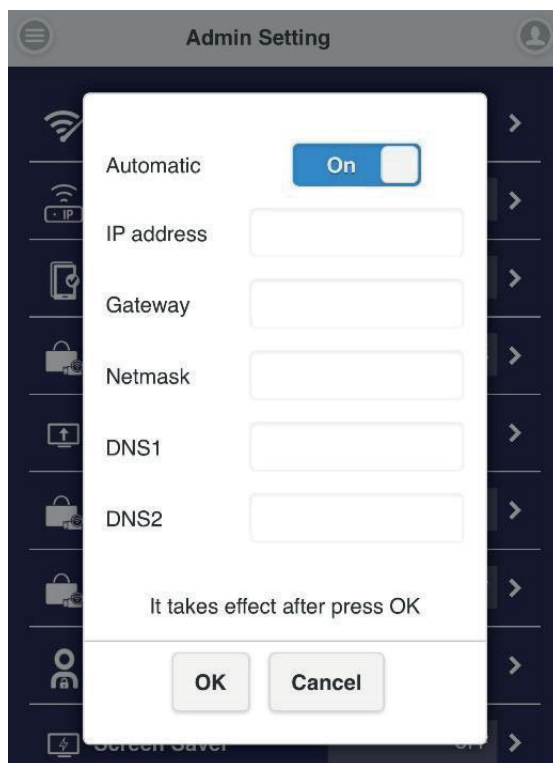
- 1 Country
- 1 Channel
- 1 Bandwidth



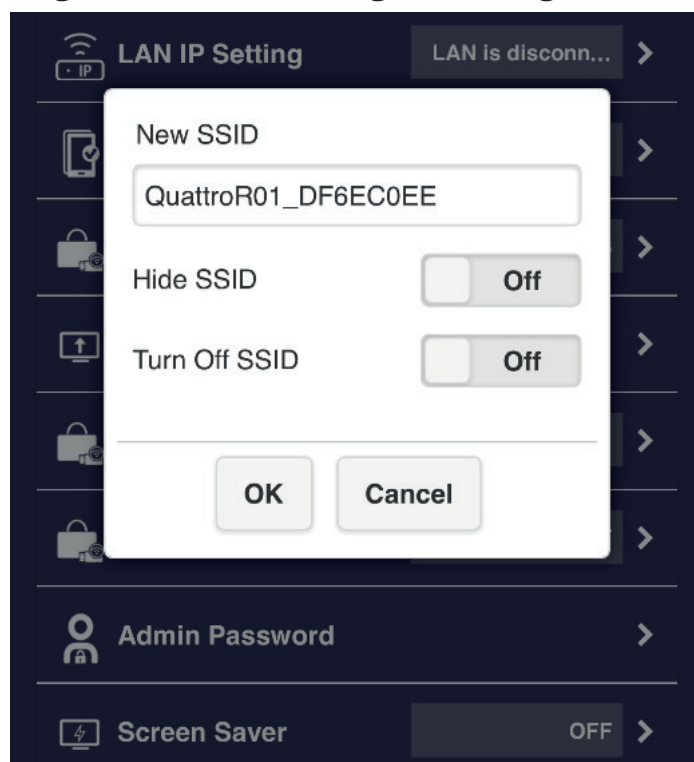
Please note that user can only configure Wi-Fi Channel while QuattroPod is not connected to Wi-Fi.



- ii. LAN IP Setting: Configuring LAN network, including IP address, Gateway, Netmask, DNS, etc.



- iii. SSID: Custom setting for SSID, including renaming, Hide SSID or Turn Off SSID.



1. Hide SSID:
Hide SSID from the standby screen.
Please make sure you've written it down.

Warning: The WiFi SSID will be "Hidden"
Please make sure you have written it down. You
will have to add it manually later.
if you want to link to this WiFi SSID next time.

OK

Cancel

2. Turn Off SSID:

Deactivating QuattroPod's SSID function. Please make sure that the device is already connected to LAN.

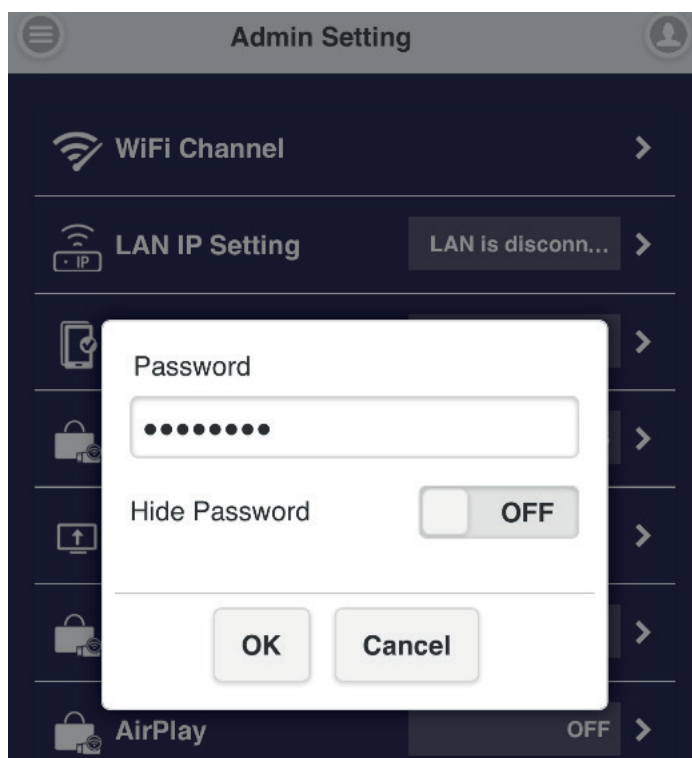
Warning: This WiFi SSID will be "Turned Off",
you will need to use LAN to connect it or to turn
WiFi on again
It will take effect after rebooting, reboot now?

OK

Cancel

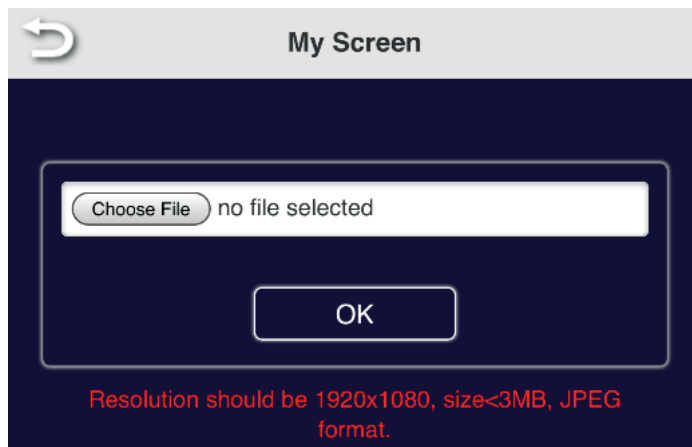
iv. Password:

Change QuattroPod's Wi-Fi connection password. To provide better connection security, an admin may hide the Wi-Fi password from the standby screen.

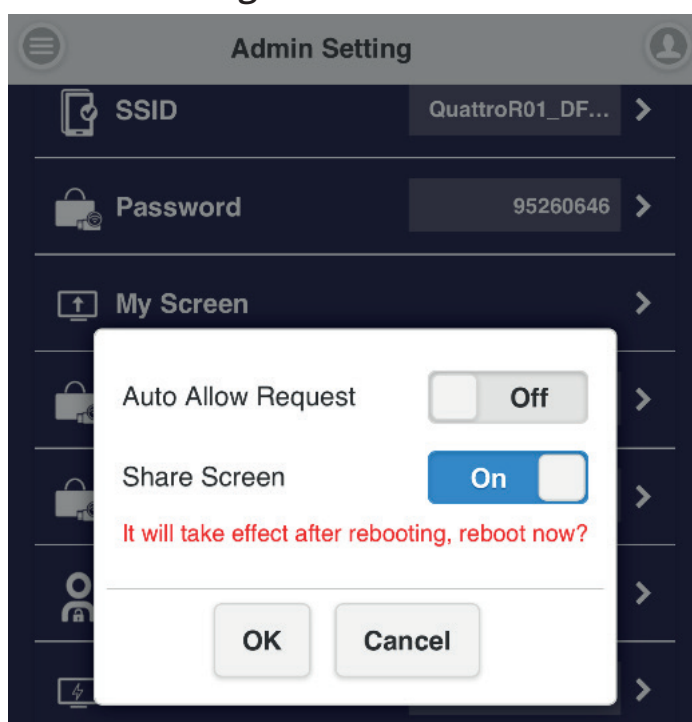


v. My Screen:

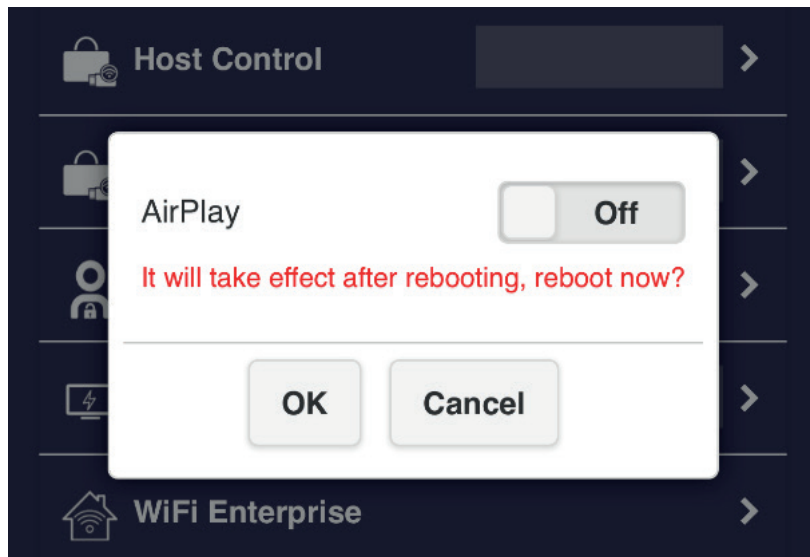
User may replace the default theme of standby screen by uploading photos. Please make sure the image format is JPEG in 1920 x 1080 and smaller than 3MB.



- vi. Host Control:
Admin can control other casting devices.



1. Auto Allow Request: Once turned on, other devices can cast content to output screen directly.
 2. Share Screen: Once turned on, based on the number of connected devices, the output screen will be split into one-half or one-quarter.
- vii. AirPlay:
AirPlay function is turned off by default. iOS, OS X users may turn on to utilize AirPlay, native casting function provided by Apple.

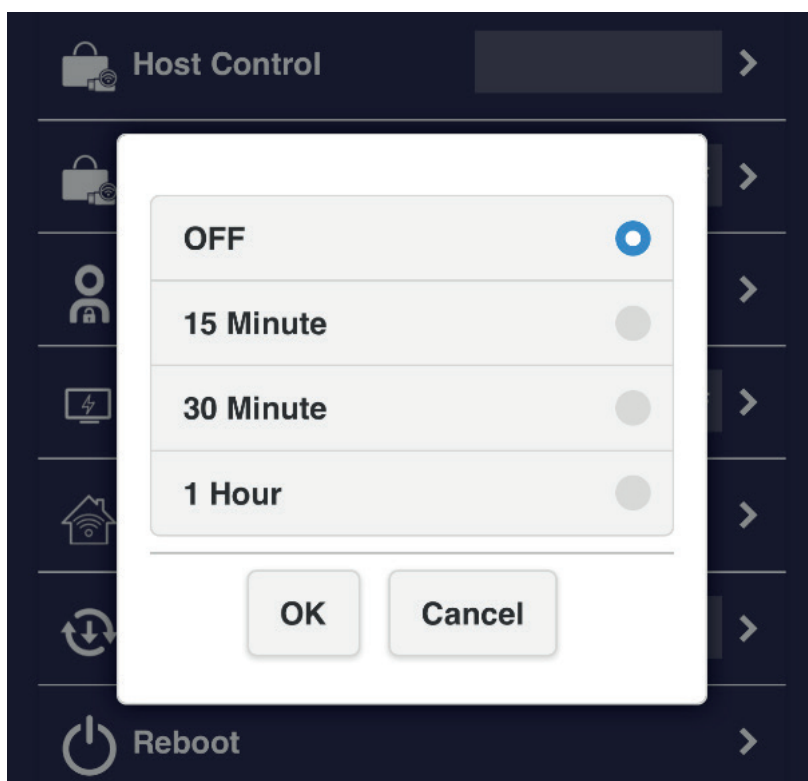


viii. Admin Password:

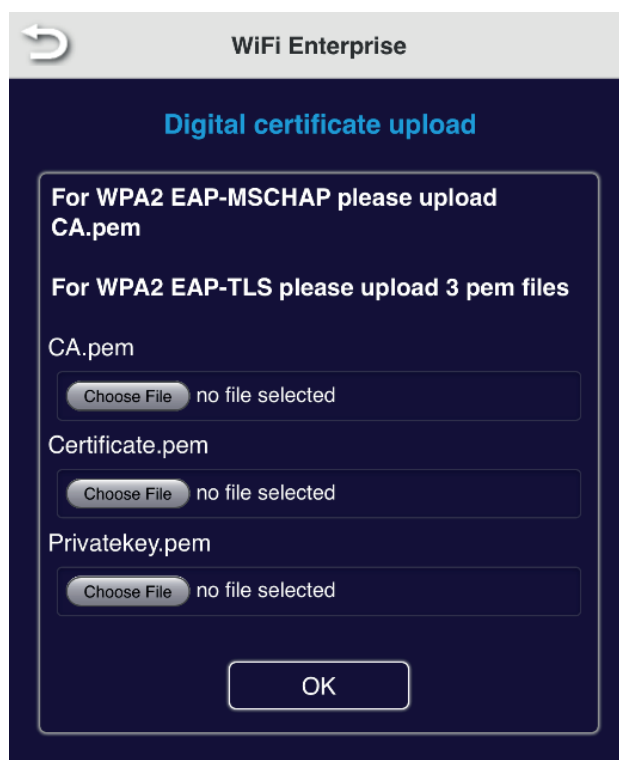
To provide better security, we suggest that user may change an Admin Password regularly.

A screenshot of a "Change Admin Password" screen. The title "Change Admin Password" is displayed in blue text at the top. Below the title, there are two input fields: "New Password" and "Confirm Password". Each input field is a simple white rectangle with a thin border. At the bottom of the screen, there is a white button with the text "Apply" in black.

- ix. **Screen Saver:**
Specifies how much user idle time must elapse before the screen saver is launched.

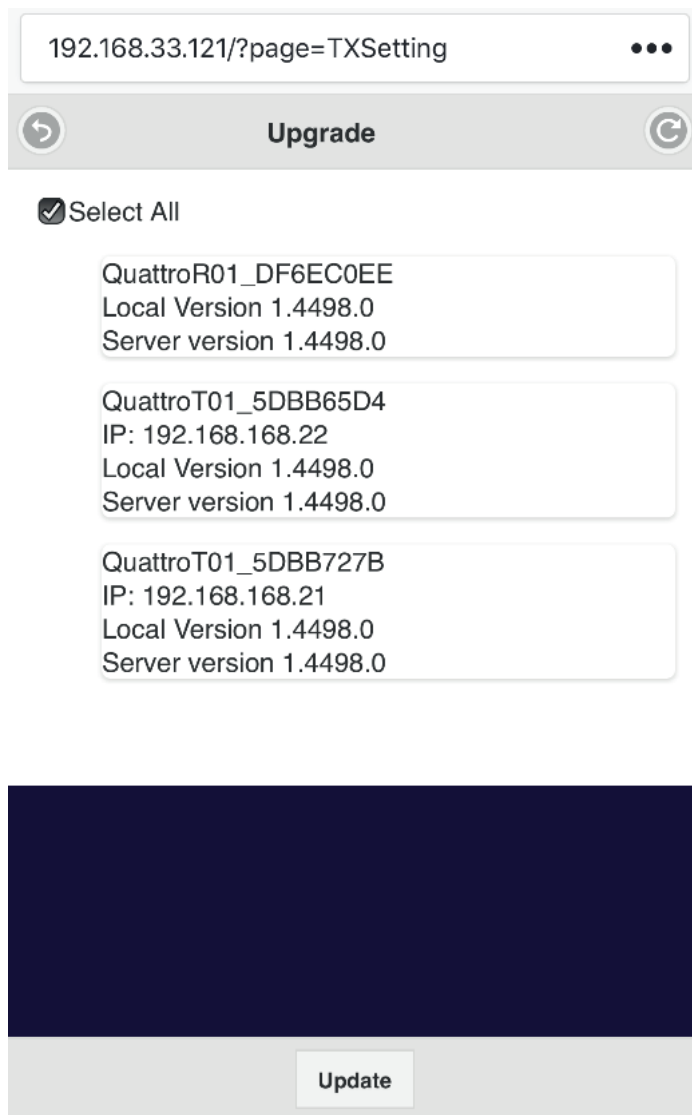


- x. **WiFi Enterprise:**
Wi-Fi Enterprise function allows a user to upload a Digital certificate. This function is designed for the advanced user, including MIS Engineer, Network Admin, etc.



- xi. Upgrade:
Upgrade your QuattroPod Receiver and Transmitter's firmware to latest version. Please make sure QuattroPod is connected to the internet during the updating process.

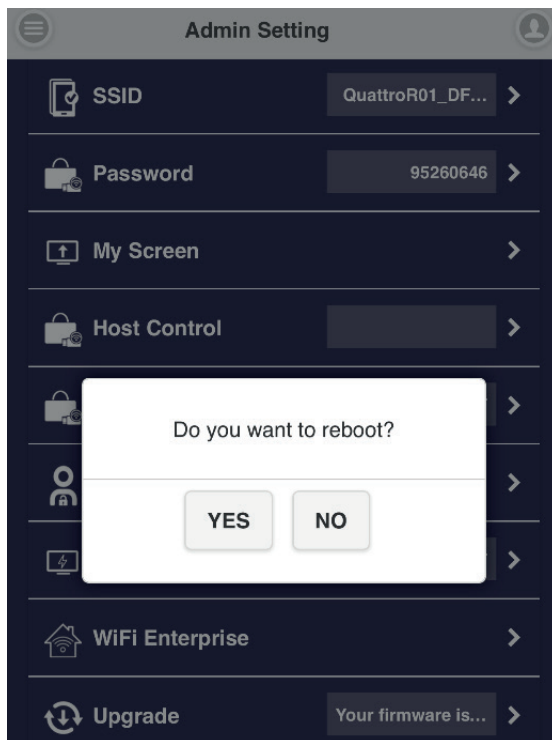
The following section elaborates on details process of firmware update.



1. Please make sure QuattroPod Receiver is connected to the internet.
2. Connect QuattroPod Transmitter to an external power supply. Please make sure your Transmitter has been paired with Receiver.
3. Click "Select All", allowing user to update all QuattroPod devices at once.
4. Press "Update" button to activate the download process. The whole process will be done within a few minutes, please be patient.

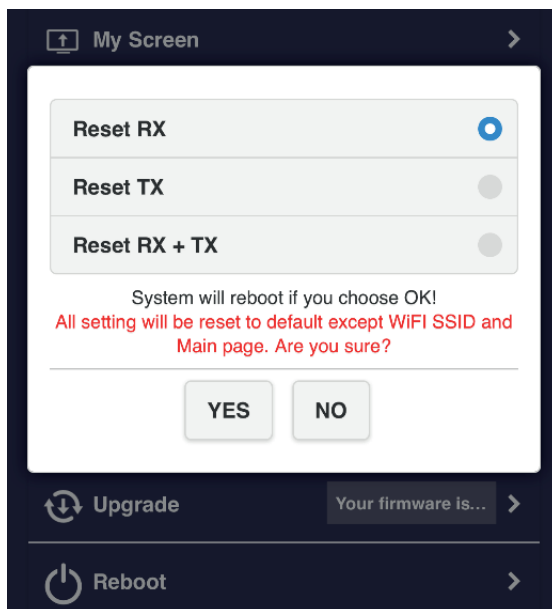
xii. Reboot:

User may reboot device when new configuration applied to QuattroPod.



xiii. Reset to default:

Reset QuattroPod to factory defaults. Please note that all the custom configuration will be cleared.



1. Reset RX: Reset QuattroPod Receiver only.
2. Reset TX: Reset QuattroPod Transmitter only.
3. Reset RX + TX: Reset both QuattroPod Receiver and Transmitter.

V. About

Showing details device information about QuattroPod, including SSID, Firmware Version, Wi-Fi Channel, etc.



VI. Download Android APK

For Android users, please enable USB debugging mode for USB display first, or you can download QuattroPod APK from Quattro R01's webpage or Google Play.

Users who download APK from Quattro R01's webpage, QuattrodPod may need your further authorization and trust to install APK file, since this APK is not directly downloaded from Google Play.

