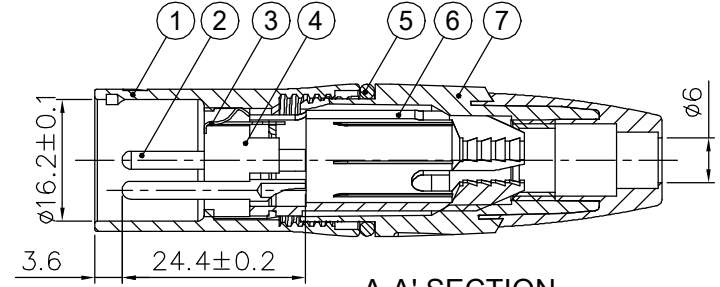
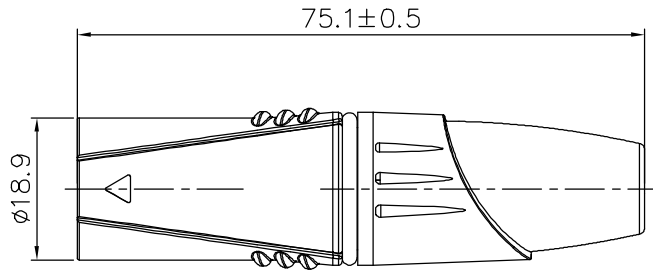
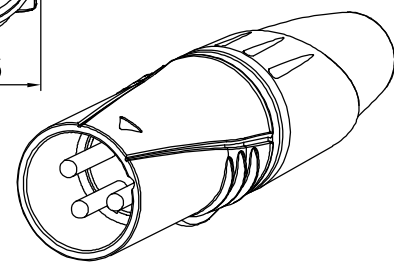
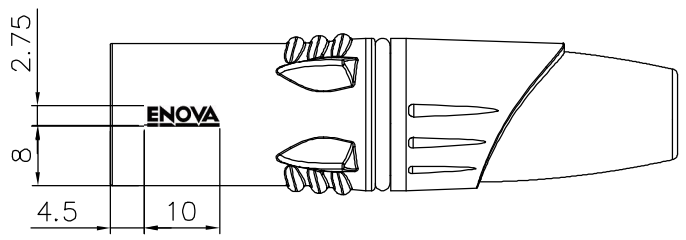
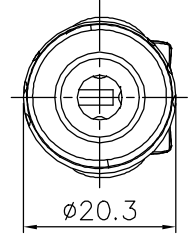
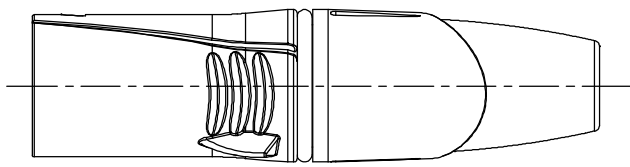
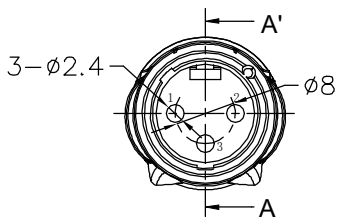


1 2 3 4 5 6 7 8

REVISIONS		
ISS	ZONE	DESCRIPTION\PER REQUEST\DATE
V	OPEN	Open drawings to customers



Notes:
 1. Remove O-ring used for cable O.D.: 3.3~4.8mm,
 Standard connector used for cable O.D.: 5.0~7mm



NO.	DESCRIPTION	MATERIAL	FINISH	Q'TY	DRAWING NO.
7	CAP+BOOT	PA6+TPR	BK+GY	1	
6	CABLE CLAMP	POM	WHITE	1	
5	O-RING	SILICON	BLACK	1	
4	INSULATOR	PA	BLACK	1	
3	Terminal	H62	TIN	1	
2	PIN	H59-1	SILVER	3	
1	DIE CAST SHELL	ZZnAL4-1	Electro coating black	1	

DIMENSIONS ARE IN MILLIMETERS		APPROVED	DATE
UNLESS OTHERWISE SPECIFIED TOLERANCES		CHECKED	DATE
ANGLES = ±5°		DRAWN	DATE
UP TO 6 = ±0.2		HAONANHU	209-8-27
6-40 = ±0.4		FILE NO.	
40-120 = ±0.6			
120-315 = ±1			
ABOVE 315 = ±1.6			
THIRD_ANGLE		ERP LINK:	
SCALE	1/1		

Connector Distribution GmbH			
TITLE			
3PIN XLR MALE CONNECTOR			
PART NO.	XL23MB	REV.	A1

1 2 3 4 5 6 7 8

F
E
D
C
B
A

F
E
D
C
B
A