

# Advanced IP Streaming Technology

## Quick Start Guide

ActiveSQX2

Scalable IP Encode and Decode Card



Engineering the **world's best** visual solutions

  
**DATAPATH**  
EXCELLENCE BY DESIGN

# ActiveSQX2 Quick Start Guide

Thank you for purchasing the Datapath ActiveSQX2 card. The aim of this document is to quickly guide you through the process of initial setup.

The ActiveSQX2 card is an advanced encoding and decoding IP streaming card designed to support Datapath's own SQX technology.

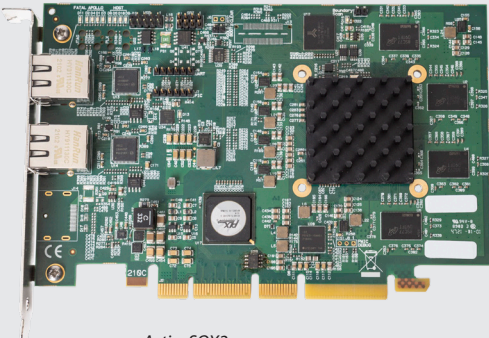
## CONTENTS

Your packing box contains the following items:

- Your ActiveSQX2 encode and decode capture card

*For latest drivers go to [www.datapath.co.uk](http://www.datapath.co.uk).*

**Note:** *All Products are static sensitive and are packed in antistatic materials. Please keep the card in its packaging until you are ready to install.*



ActiveSQX2

## STEP 1 - HARDWARE INSTALLATION

To install your ActiveSQX2 card, follow these simple steps. You will need a flat-blade and / or a cross-head screwdriver to hand.

Power down the PC (including peripherals), switch off at the mains and disconnect all the cables connected to the computer, noting the positions for accurate reconnection

Remove the PC cover.

Locate a vacant PCIe slot on the motherboard and remove the backing plate (retain all screws).

Remove the card from its packaging and secure it firmly into the empty PCIe slot.

Screw the ActiveSQX2 bracket to the back panel of the PC and replace the cover.

Connect the network cable(s) distributing the IP Stream to one or both of the RJ45 connectors on the ActiveSQX2 card.

**Note:**

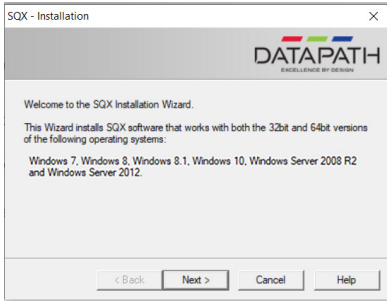
The RJ45 connectors are designed to be used on two different networks. Connecting both to the same network will degrade the performance of the card.

Reconnect all cables to the PC and power on.

# ActiveSQX2 Quick Start Guide

## STEP 2 - SOFTWARE INSTALLATION

Download the latest version of SQX install from the Resource Center on the Datapath website, follow the Installation Wizard instructions as prompted.



We suggest that you regularly visit the Datapath web site for information on updated drivers. [www.datapath.co.uk](http://www.datapath.co.uk)

## COPYRIGHT STATEMENT

■ © Datapath Ltd., England 2022.

Datapath Limited claims copyright on this documentation. No part of this documentation may be reproduced, released, disclosed, stored in any electronic format, or used in whole or in part for any purpose other than stated herein without the express permission of Datapath Limited.

Whilst every effort is made to ensure that the information contained in this documentation is correct, Datapath Limited make no representations or warranties with respect to the contents thereof, and do not accept liability for any errors or omissions.

Datapath reserves the right to change specification without prior notice and cannot assume responsibility for the use made of the information supplied. All registered trademarks used within this documentation are acknowledged by Datapath Limited.



**Datapath UK and**

**Corporate Headquarters**

Bemrose House, Bemrose Park,  
Wayzgoose Drive, Derby,  
DE21 6XQ, United Kingdom

☎ +44 (0) 1332 294 441

✉ [sales-uk@datapath.co.uk](mailto:sales-uk@datapath.co.uk)

**Datapath North America**

2490 General Armistead Avenue,  
Suite 102, Norristown,  
PA 19403, USA

☎ +1 484 679 1553

✉ [sales-us@datapath.co.uk](mailto:sales-us@datapath.co.uk)

**Datapath Japan**

Axon Hamamatsucho,  
1-1-23 Shibadaimon,  
Minato-ku,  
Tokyo-to,  
105-0012

✉ [sales-jp@datapath.co.uk](mailto:sales-jp@datapath.co.uk)

[www.datapath.co.uk](http://www.datapath.co.uk)

