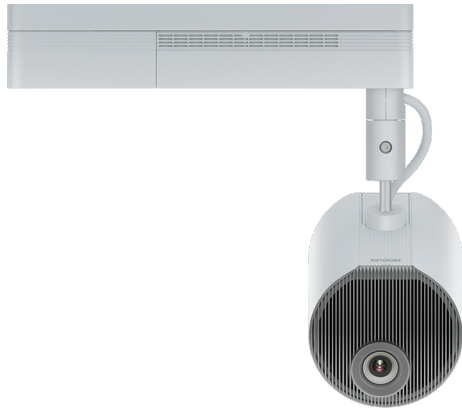


LightScene EV-110



DATASHEET / BROCHURE



The EV-110 is an innovative and versatile 2,200 lumens laser projection solution for creating experiential displays and digital signage.

Add movement and life to retail displays, hospitality events, visitor experiences, galleries, museums, corporate environments or exhibitions, with a low visual noise projector that blends into any environment. The EV-110 brings lighting and projection together, and perfectly combines high design, high image quality and installation flexibility.

Minimalist design - maximum impact

The LightScene EV-110 allows users to unlock their creativity and project instantly appealing visuals, with sharp WXGA resolution and 2,200 lumens brightness. Thanks to its discreet design, it can be used where a traditional projector may stand out. A black version is also available.

Simple, flexible implementation

A lightweight, adaptable design means the EV-110 can be installed in a variety of ways, from a traditional ceiling mount to a freestanding floor mount, or attached to a lighting track, including recessed lighting tracks.

Signage-ready

Featuring a built-in media player with wireless content upload, allowing playlists to be loaded onto an SD card and played directly from the projector¹. The EV-110 also features HDMI connectivity for simple integration into content management systems without specialist installation.

Advanced installations made easy

The GPI function supports direct sensor connectivity for creating dynamic experiences that can adapt to situational changes without the need for costly external hardware. The EV-110 also uses advanced techniques such as edge blending to achieve stunning results in larger spaces that require multiple unit installations.

Fit and forget reliability

A five-year warranty, combined with Epson's reliable laser light source technology and sealed optical engine, means that the EV-110 does not require regular maintenance.

KEY FEATURES

- **Experiential projection**
Create borderless content, lighting effects and blended displays with ease
- **Sensor-based content**
GPI function for simple sensor-based experiences
- **Flexible installation**
Can be ceiling-mounted, freestanding or attached to a lighting track
- **Signage-ready**
Built-in media player and simple CMS integration
- **Fit and forget reliability**
Durable Epson laser technology supported by a five-year warranty



EPSON®

PRODUCT SPECIFICATIONS

TECHNOLOGY

Projection System	3LCD Technology
LCD Panel	0.59 inch with C2 Fine

IMAGE

Color Light Output	2,200 Lumen- 1,100 Lumen (economy) In accordance with IDMS15.4
White Light Output	2,200 Lumen - 1,100 Lumen (economy) In accordance with ISO 21118:2020
Resolution	WXGA 2
Aspect Ratio	16:10
Contrast Ratio	2,500,000 : 1
Native Contrast	2,000 : 1
Light source	Laser
Laser Light source	20,000 hours Durability High, 30,000 hours Durability Eco
Keystone Correction	Manual vertical: $\pm 45^\circ$, Manual horizontal $\pm 40^\circ$
Colour Reproduction	16.77 million colours

OPTICAL

Throw Ratio	1.38 - 2.19:1
Zoom	Motorized, Factor: 1 - 1.58
Lens	Optical
Screen Size	30 inches - 150 inches
Projection Distance Wide	0.9 m - 4.5 m
Projection Lens F Number	1.51 - 1.92
Projection Lens Focal Length	18.2 mm - 28.4 mm
Projection Lens Focus	Motorized

CONNECTIVITY

Interfaces	USB 2.0-A, USB 2.0 Type B (Service Only), Ethernet interface (100 Base-TX / 10 Base-T), Wireless LAN b/g/g 25GHz, HDMI in, Jack plug out, SD Card Slot, SD Card playback, Wireless LAN a/n (5GHz)
Network Protocol	HTTPS, IPv6, SNMP, ESC/VP.net, PJLink

ADVANCED FEATURES

Security	Wireless LAN security, Password protection
Other features	A/V mute, Auto Power On, Digital zoom, Edge Blending, Horizontal and vertical keystone correction, Image Shift, Long light source life, Quick Corner, Web Control, Web Remote
Video Color Modes	Dynamic, Normal
Projector control	via: Crestron, Crestron Integrated Partner, Crestron RoomView

LightScene EV-110

WHAT'S IN THE BOX

- Cable cover
- Direct mount unit
- HDMI Cable Clamp
- Power cable
- Remote control incl. batteries
- User's Manual Set
- Hexagon wrench
- Safety wire set



EPSON
WORLD LEADER
IN PROJECTORS

Source: Futuresource Consulting Ltd.

EPSON[®]

PRODUCT SPECIFICATIONS

GENERAL

Power consumption	124 Watt - On mode power consumption (Normal) 149 Watt (Peak), 112 Watt (Eco), 0.4 Watt (Energy saving standby)
Supply Voltage	AC 100 V - 240 V, 50 Hz - 60 Hz
Product dimensions (default position)	530 x 470 x 250 mm (Width x Depth x Height)
Dimensions: Projection Unit	Ø175 x 260 mm (Depth)
Dimensions: Power Supply	361 x 110 x 65 mm (Width x Depth x Height)
Product weight	5 kg
Noise Level	Normal: 34 dB (A) - Economy: 22 dB (A)
Supported Temperature	Operation 5° C - 40° C, Storage -10° C - 60° C
Supported Humidity	Operation 20% - 80%, Storage 10% - 90%
Included Software	Epson Creative Projection, Epson Projector Content Manager
Options	Floor stand, Lighting track mount
Room Type / Application	Projection Mapping, Signage / Retail, Visitor Attraction
Positioning	Ceiling Mounted, Floor, Lighting Track, Wall Mounted
Colour	White

OTHER

Warranty	60 months Carry in or 12,000 h Optional warranty extension available
----------	---

LightScene EV-110

WHAT'S IN THE BOX

- Cable cover
- Direct mount unit
- HDMI Cable Clamp
- Power cable
- Remote control incl. batteries
- User's Manual Set
- Hexagon wrench
- Safety wire set

OPTIONAL ACCESSORIES

- Lighting Track Mount - ELPMB66W
V12HA32040
- Floor Stand - ELPMB55W - EV-100
V12H888W10

LightScene EV-110

LOGISTICS INFORMATION

SKU	V11HA22040
EAN code	8715946689326
Country of Origin	China



SYNC AV d.o.o.
Celovška cesta 172
1000 Ljubljana
Slovenia
info@sync-av.com

* Warranty offers are not available for all countries. Please contact your local Epson representative.

For further information please contact your local Epson office or visit www.epson-europe.com
Austria 01 253 49 78 333 Belgium +32 (0)2 792 04 47 Czech 800/142 052 Denmark 44 50 85 85 Finland 0201 552 091 France 09 74 75 04 04
(Cost of local call, operator charges may apply) Germany +49 (0) 2159/92 79 500 Greece +30 211 198 62 12 Hungary 06800 147 83 Ireland 01 436 7742
Italy 02-660321 10 (0,12 /min) Luxembourg +352 27860692 Middle East +9714 8872172 Netherlands +31 (0)20 708 5099 Norway +47 67 11 37 00
Poland 0-0-800 4911299 (0,16 zł/min) Portugal 707 222 111 Russia (095) 777-03-55 Slovakia 0850 111 429 South Africa (+2711) 465-9621
Spain 93 582 15 00 Sweden 0771-400135 (Mobilsamtal – 0,99 kr/min, Lokala samtal – 0,30 kr/min, Utlandssamtal – 0,89 kr/min)
Switzerland 022 592 7923
Turkey (0212) 3360303 United Kingdom 0871 222 6702

1. Requires free Epson Projector Content Manager software or Epson Creative Projection app.

Trademarks and registered trademarks are the property of Seiko Epson Corporation or their respective owners.
Product information is subject to change without prior notice.

EPSON®