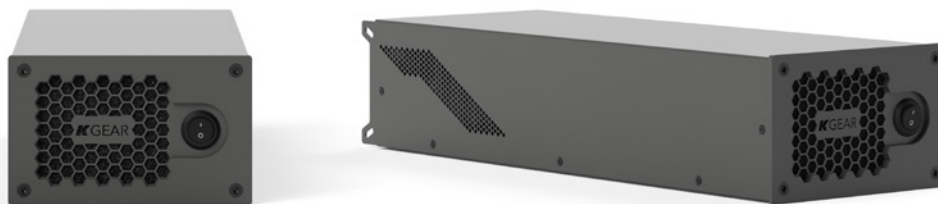


GA46L

1500 W 4-ch Switching Mode Power Amplifier

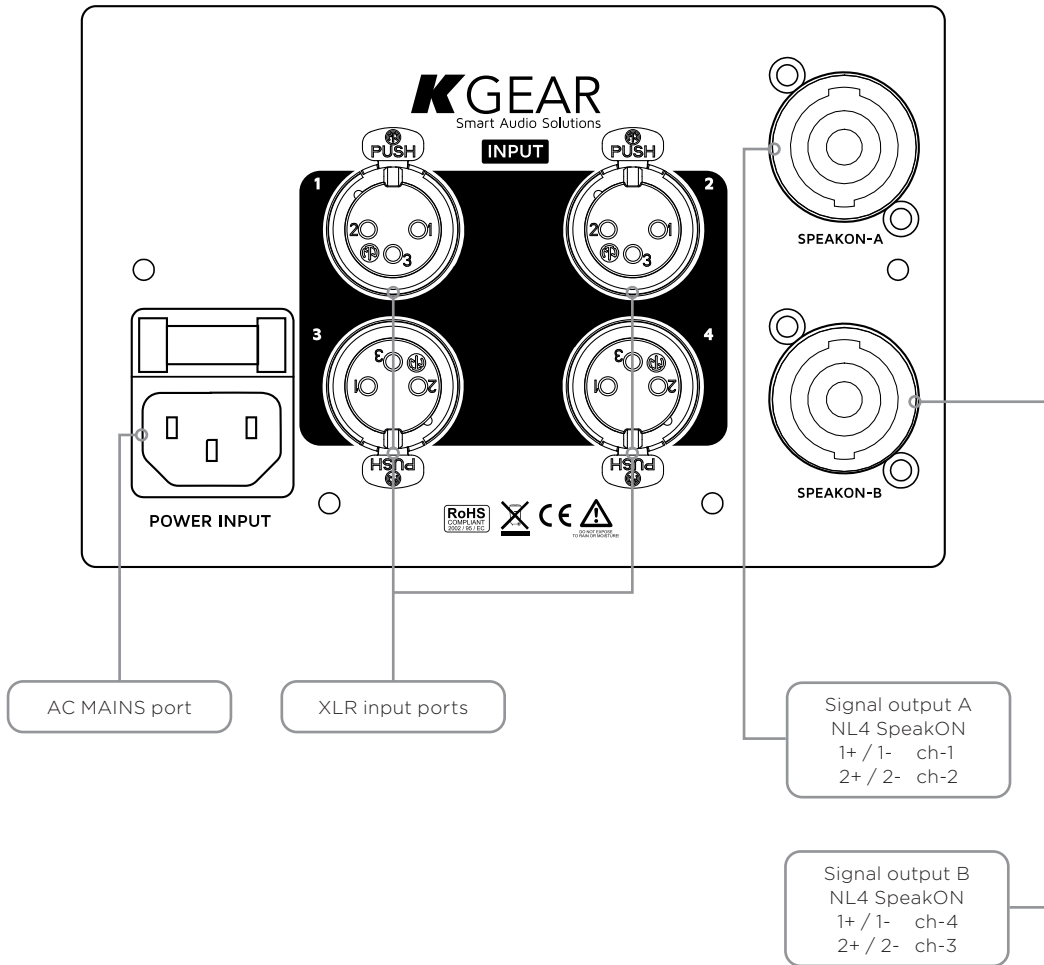


Compact 4-ch high efficiency switching mode Class D amplifier featuring Powersoft power module.

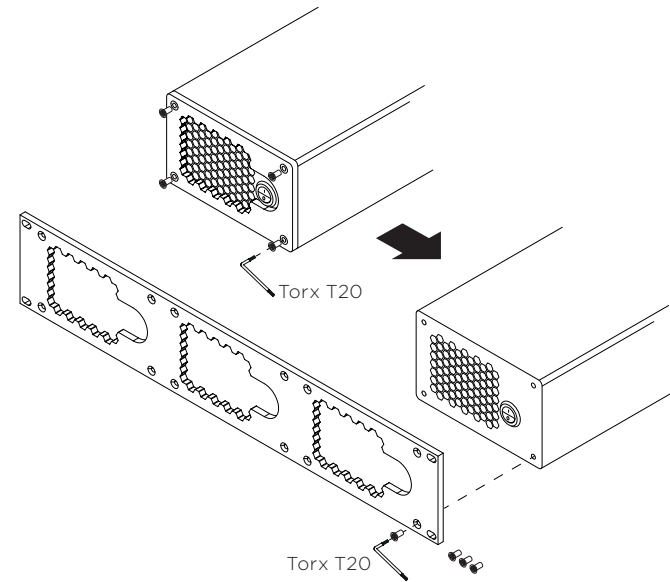
Designed for high performance applications both for rental and permanent installations such as touring, large auditoriums, stadiums, theme parks and clubs. Thanks to the modular design, 3 amplifier elements can fit into 2 rack units with a dedicated adapter.

| General | |
|--------------------|--|
| Type | 4-ch Class D power amplifier |
| Output power | 4x 1500 W _{peak} @ 4 Ω Suitable for 70 V, 100V lines |
| Minimum impedance | 4 Ω |
| Frequency response | 20 Hz - 20 kHz |
| Input connectors | 4x XLR balanced |
| Output connectors | 2x NL4 SpeakON |
| Protections | Thermal Protections (Power limiting - Thermal Shutdown), Short-circuit/overload output protections, stationary high frequency protection, peak limiter, RMS limiter, frequency dependent RMS limiter, Clip limiter |
| Power Consumption | 500W Rated Load (1/8 Max Output Power) |
| Operating Voltage | 90-240V AC, 50-60 Hz |
| Dimensions (WxHxD) | 145 x 90 x 418 mm (5.7 x 3.54 x 16.5 in) |
| Weight | 3,8 kg (8.37 lb) |
| Material | Stainless steel |
| Color | Black |

Rear panel



Rack Mount Accessory



Output Wirings

